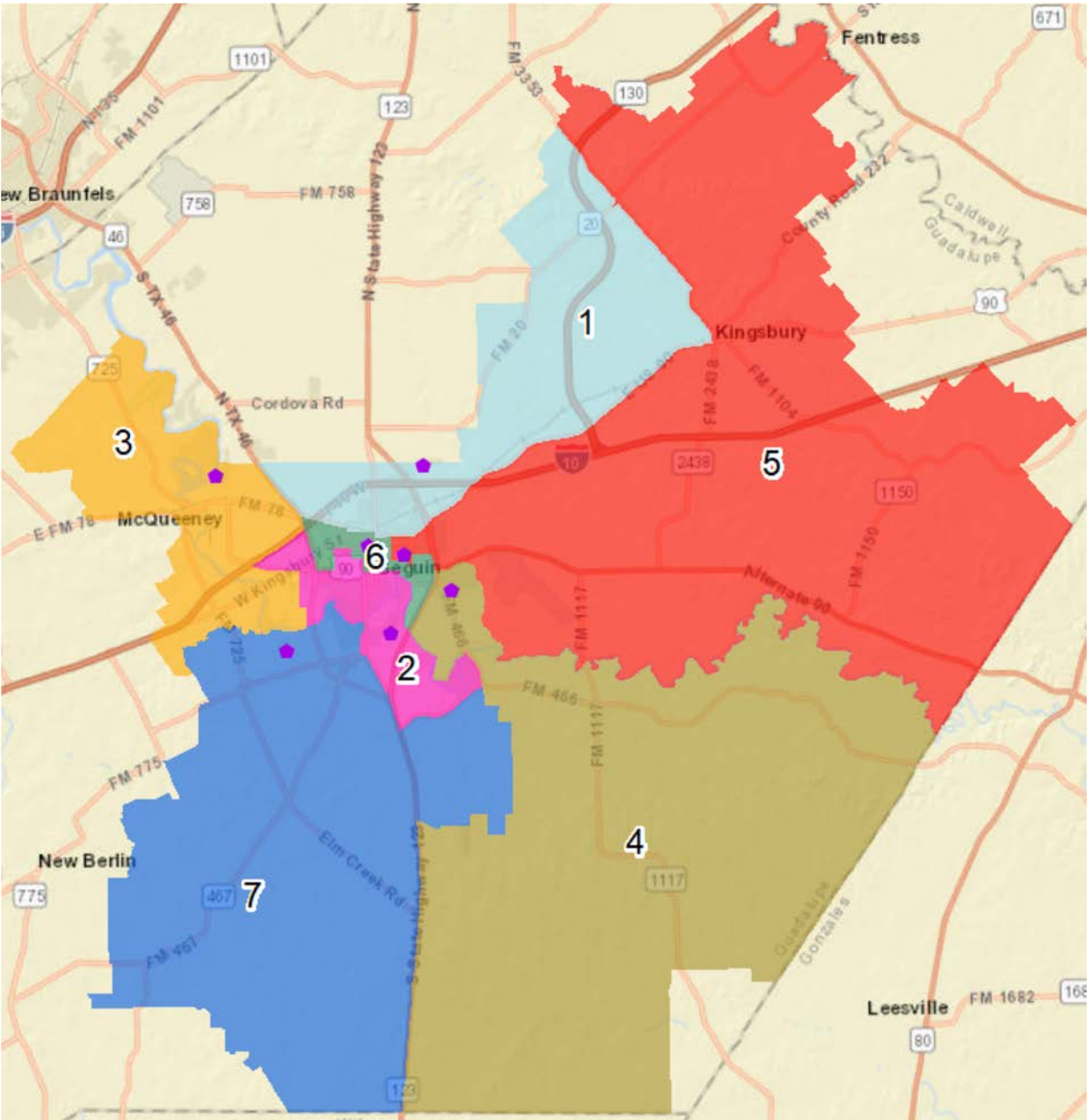


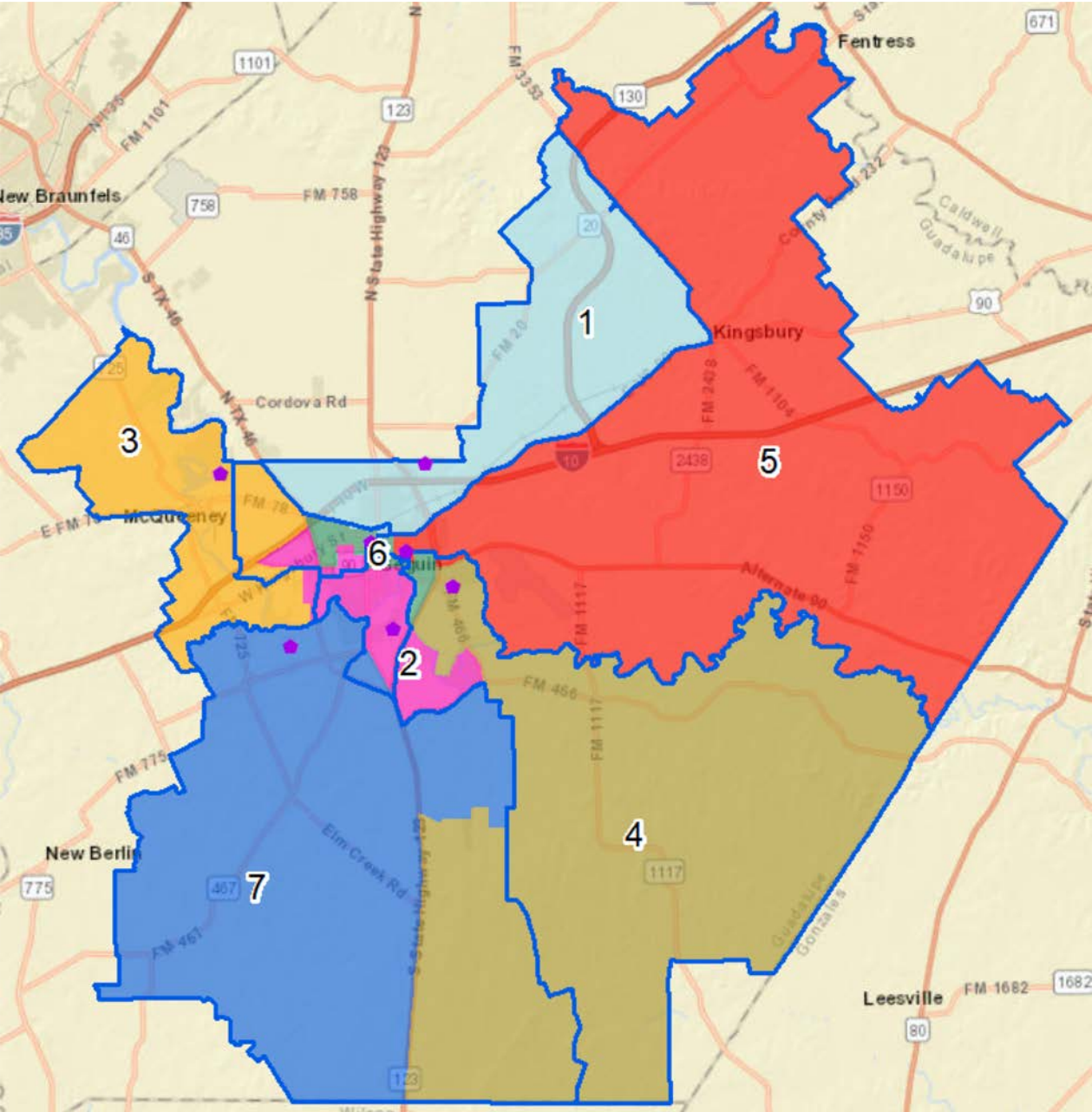
Seguin Independent School District



Plan 3



# Seguin Independent School District

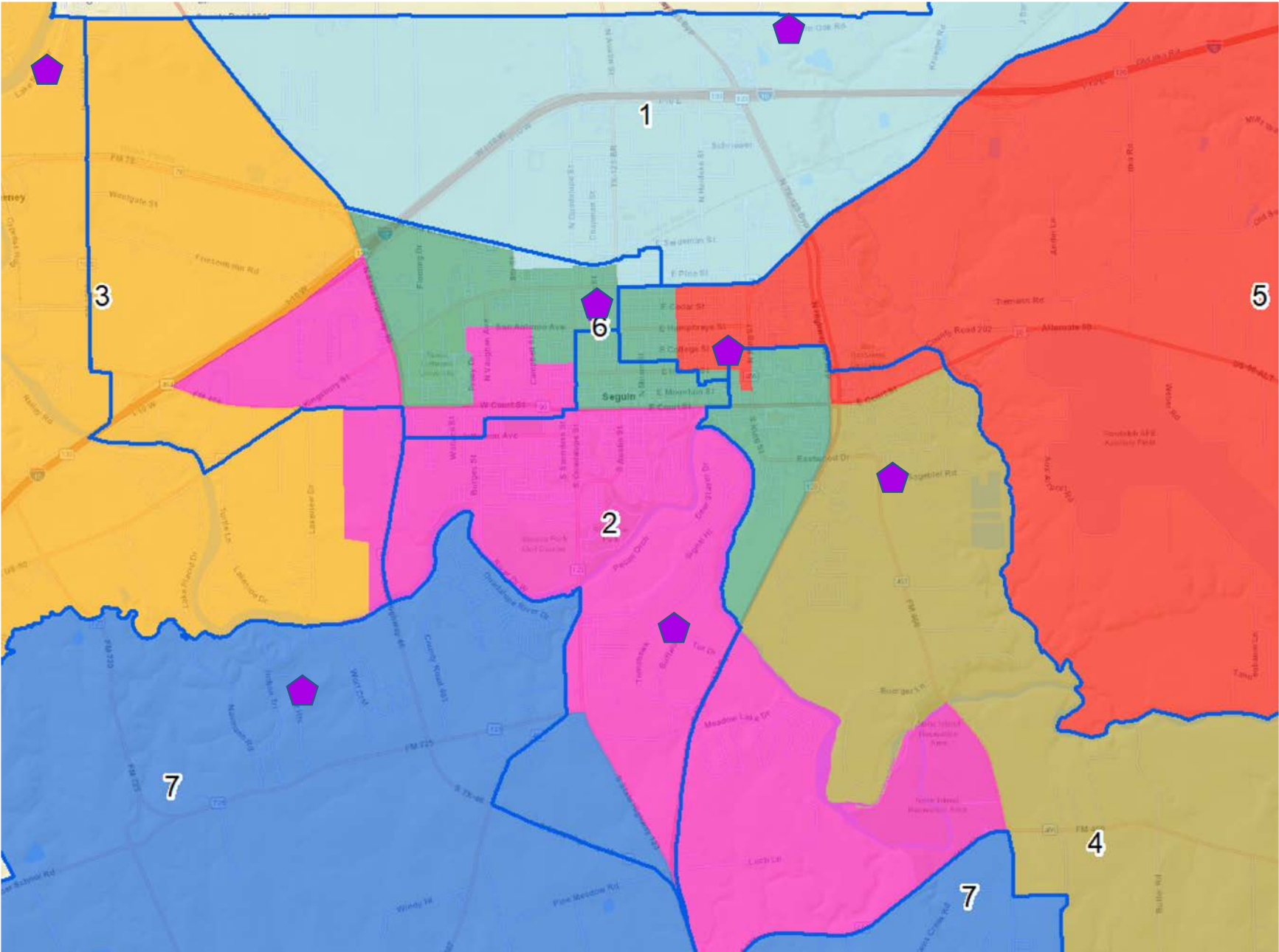
## Plan 3




-  Trustee Address
-  Current Boundary

# Seguin Independent School District

## Plan 3

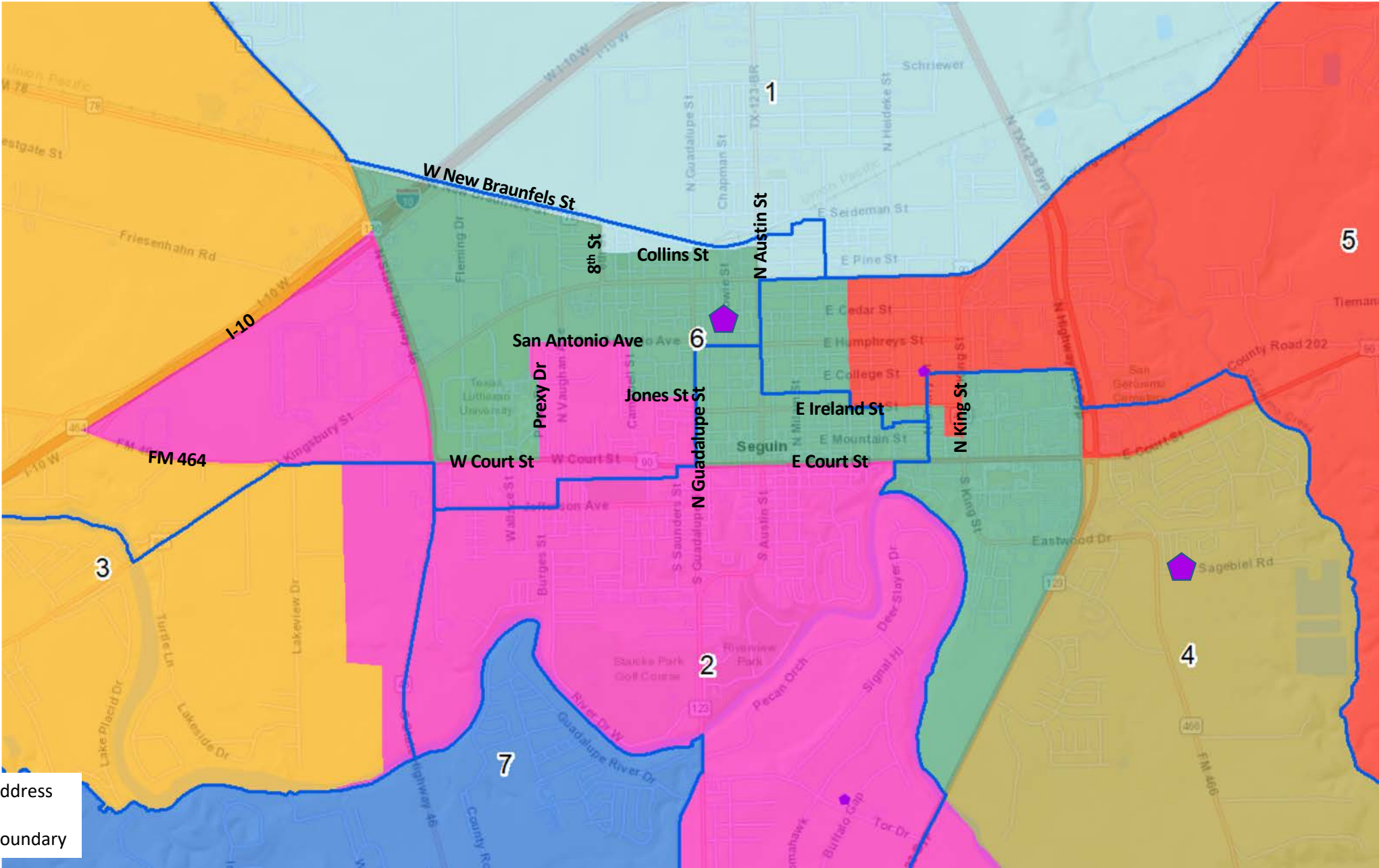




 Trustee Address

 Current Boundary

# Seguin Independent School District

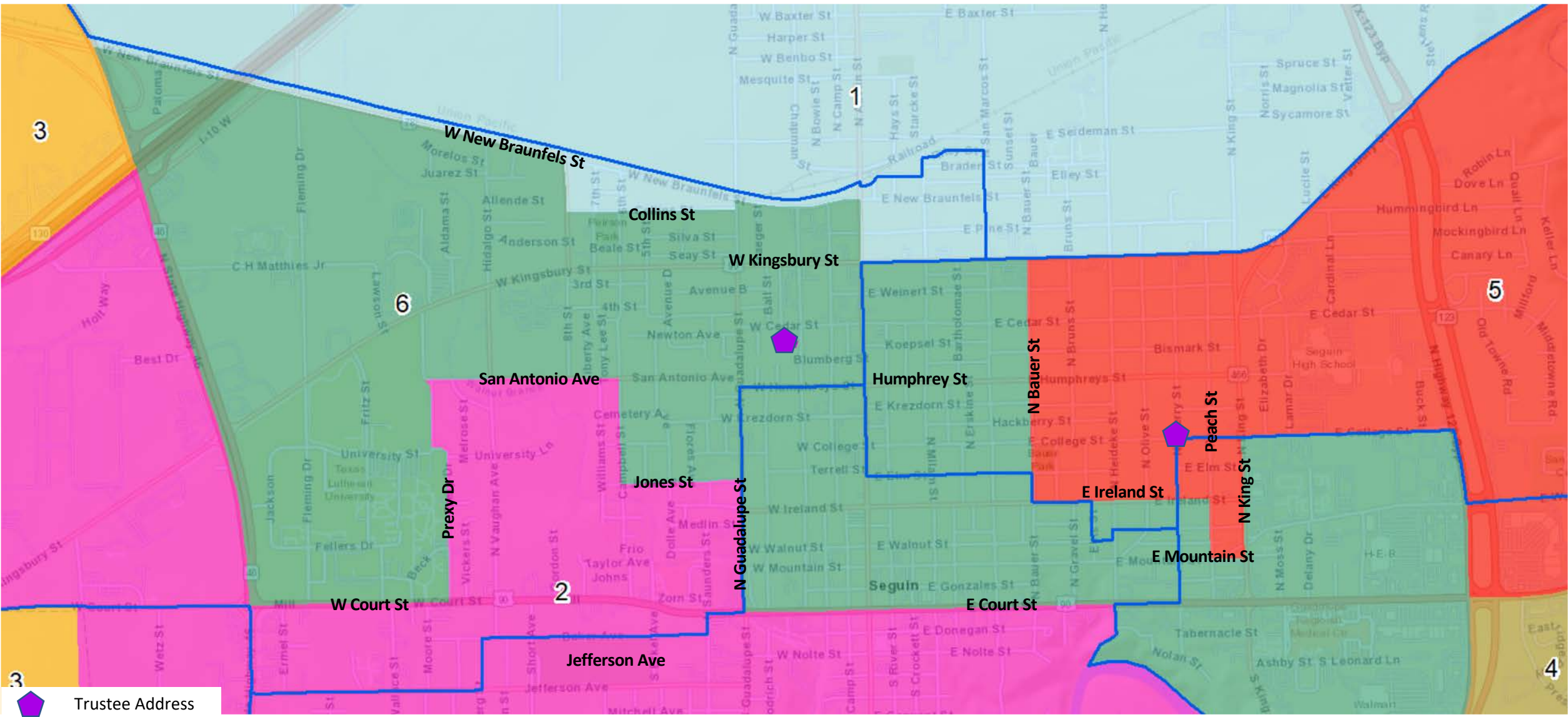
## Plan 3



-  Trustee Address
-  Current Boundary

# Seguin Independent School District

## Plan 3



3  
Trustee Address

Current Boundary

# Seguin Independent School District

## Plan 3 Analysis

SEGUIN INDEPENDENT SCHOOL DISTRICT													
2020 CENSUS TOTALS - PLAN 3													
Trustee District	TOTAL POPULATION						TOTAL POPULATION PERCENTAGES						
	Anglo	Asian	Black	Hispanic	Other	Total	Anglo	Asian	Black	Hispanic	Other	Total	
1	1,783	35	399	3,971	197	6,385	27.9%	0.5%	6.2%	62.2%	3.1%	100.0%	
2	2,018	17	422	4,045	163	6,665	30.3%	0.3%	6.3%	60.7%	2.4%	100.0%	
3	3,676	25	161	2,734	251	6,847	53.7%	0.4%	2.4%	39.9%	3.7%	100.0%	
4	3,959	94	189	2,424	288	6,954	56.9%	1.4%	2.7%	34.9%	4.1%	100.0%	
5	3,693	33	198	2,161	248	6,333	58.3%	0.5%	3.1%	34.1%	3.9%	100.0%	
6	1,982	49	439	4,231	144	6,845	29.0%	0.7%	6.4%	61.8%	2.1%	100.0%	
7	3,956	25	211	2,461	214	6,867	57.6%	0.4%	3.1%	35.8%	3.1%	100.0%	
<b>TOTALS</b>	<b>21,067</b>	<b>278</b>	<b>2,019</b>	<b>22,027</b>	<b>1,505</b>	<b>46,896</b>	<b>44.9%</b>	<b>0.6%</b>	<b>4.3%</b>	<b>47.0%</b>	<b>3.2%</b>	<b>100.0%</b>	
		<b>7 DIST AVG</b>		<b>6,699</b>		<b>8.9% Percent Differential *</b>							

Trustee District	VOTING AGE POPULATION (VAP) PERCENTAGES						CITIZEN VOTING AGE POPULATION (CVAP) PERCENTAGES					
	Anglo	Asian	Black	Hispanic	Other	Total	Anglo	Asian	Black	Hispanic	Other	Total
1	32.4%	0.5%	6.5%	58.0%	2.6%	100.0%	29.9%	0.5%	11.6%	57.7%	0.3%	100%
2	34.8%	0.3%	6.6%	56.2%	2.2%	100.0%	35.7%	0.2%	7.7%	56.2%	0.2%	100%
3	59.3%	0.4%	2.2%	34.7%	3.4%	100.0%	68.4%	2.5%	0.7%	28.2%	0.2%	100%
4	61.3%	1.3%	2.7%	30.9%	3.8%	100.0%	69.2%	1.0%	1.9%	26.9%	1.0%	100%
5	62.3%	0.6%	3.1%	30.4%	3.6%	100.0%	70.1%	0.4%	4.5%	24.1%	0.8%	100%
6	31.7%	0.8%	7.0%	58.6%	1.9%	100.0%	32.2%	0.5%	10.3%	55.3%	1.6%	100%
7	61.7%	0.4%	3.5%	31.1%	3.3%	100.0%	67.0%	0.0%	4.5%	26.4%	2.1%	100%
<b>TOTALS</b>	<b>49.4%</b>	<b>0.6%</b>	<b>4.5%</b>	<b>42.5%</b>	<b>3.0%</b>	<b>100.0%</b>	<b>80.5%</b>	<b>0.4%</b>	<b>2.4%</b>	<b>15.2%</b>	<b>1.5%</b>	<b>100%</b>

VAP: Voting Age Population

SOURCE: Total Population and Voting Age Population summarized from 2020 Census PL 94-171 Redistricting Data at the block level.

Citizen Voting Age Population data was extrapolated from 2010 Block Group Data using the 2015-2019 American Community Survey

VAP: Voting Age Population

SOURCE: Total Population and Voting Age Population summarized from 2010 & 2020 Census PL 94-171 Redistricting Data at the block level.

# Seguin Independent School District

## Plan Comparison SMD 1

<b>DISTRICT 1 - Plan Comparison</b>					
<b>Category</b>	<b>2010</b>	<b>Current</b>	<b>Plan 1</b>	<b>Plan 2</b>	<b>Plan 3</b>
<b>Population Totals</b>					
Total Anglo Population	1,617	1,741	1,813	1,813	1,783
Total Asian Population	32	33	35	35	35
Total Black Population	541	370	430	430	399
Total Hispanic	3,688	3,667	4,269	4,269	3,971
Total Other Population	51	191	207	207	197
<b>Total Population</b>	<b>5,929</b>	<b>6,002</b>	<b>6,754</b>	<b>6,754</b>	<b>6,385</b>
<b>Total Population Percentages</b>					
Total Anglo Population	27.3%	29.0%	26.8%	26.8%	27.9%
Total Asian Population	0.5%	0.5%	0.5%	0.5%	0.5%
Total Black Population	9.1%	6.2%	6.4%	6.4%	6.2%
Total Hispanic	62.2%	61.1%	63.2%	63.2%	62.2%
Total Other Population	0.9%	3.2%	3.1%	3.1%	3.1%
<b>Total Population</b>	<b>100.0%</b>	<b>100.0%</b>	<b>100.0%</b>	<b>100.0%</b>	<b>100.0%</b>
<b>Voting Age Population Percentages</b>					
Total Anglo VAP	31.0%	33.7%	31.1%	31.1%	32.4%
Total Asian VAP	0.6%	0.5%	0.5%	0.5%	0.5%
Total Black VAP	9.8%	6.4%	6.7%	6.7%	6.5%
Total Hispanic VAP	58.0%	56.7%	59.1%	59.1%	58.0%
Total Other VAP	0.6%	2.7%	2.6%	2.6%	2.6%
<b>Total VAP</b>	<b>100.0%</b>	<b>100.0%</b>	<b>100.0%</b>	<b>100.0%</b>	<b>100.0%</b>
<b>Citizen Voting Age Population Percentages</b>					
Total Anglo CVAP	<b>N/A</b>	31.0%	28.8%	28.8%	29.9%
Total Asian CVAP	<b>N/A</b>	0.5%	0.5%	0.5%	0.5%
Total Black CVAP	<b>N/A</b>	10.7%	12.3%	12.3%	11.6%
Total Hispanic CVAP	<b>N/A</b>	57.5%	58.0%	58.0%	57.7%
Total Other CVAP	<b>N/A</b>	0.3%	0.4%	0.4%	0.3%
<b>Total CVAP</b>	<b>N/A</b>	<b>100%</b>	<b>100%</b>	<b>100%</b>	<b>100%</b>

\* 2010 CVAP - Asian populations are included in "Other"

# Seguin Independent School District

## Plan Comparison SMD 2

<b>DISTRICT 2 - Plan Comparison</b>					
<b>Category</b>	<b>2010</b>	<b>Current</b>	<b>Plan 1</b>	<b>Plan 2</b>	<b>Plan 3</b>
<b>Population Totals</b>					
Total Anglo Population	1,647	1,559	2,436	2,417	2,018
Total Asian Population	29	17	55	55	17
Total Black Population	480	331	425	421	422
Total Hispanic	3,824	3,644	3,722	3,698	4,045
Total Other Population	64	116	160	154	163
<b>Total Population</b>	<b>6,044</b>	<b>5,667</b>	<b>6,798</b>	<b>6,745</b>	<b>6,665</b>
<b>Total Population Percentages</b>					
Total Anglo Population	27.3%	27.5%	35.8%	35.8%	30.3%
Total Asian Population	0.5%	0.3%	0.8%	0.8%	0.3%
Total Black Population	7.9%	5.8%	6.3%	6.2%	6.3%
Total Hispanic	63.3%	64.3%	54.8%	54.8%	60.7%
Total Other Population	1.1%	2.0%	2.4%	2.3%	2.4%
<b>Total Population</b>	<b>100.0%</b>	<b>100.0%</b>	<b>100.0%</b>	<b>100.0%</b>	<b>100.0%</b>
<b>Voting Age Population Percentages</b>					
Total Anglo VAP	31.4%	31.6%	40.5%	40.5%	34.8%
Total Asian VAP	0.6%	0.3%	0.9%	0.9%	0.3%
Total Black VAP	8.3%	6.2%	6.5%	6.5%	6.6%
Total Hispanic VAP	58.9%	60.1%	49.9%	50.0%	56.2%
Total Other VAP	0.9%	1.9%	2.2%	2.1%	2.2%
<b>Total VAP</b>	<b>100.0%</b>	<b>100.0%</b>	<b>100.0%</b>	<b>59.5%</b>	<b>65.2%</b>
<b>Citizen Voting Age Population Percentages</b>					
Total Anglo CVAP	<b>N/A</b>	37.0%	41.8%	41.8%	35.7%
Total Asian CVAP	<b>N/A</b>	0.6%	0.2%	0.2%	0.2%
Total Black CVAP	<b>N/A</b>	4.3%	7.8%	7.8%	7.7%
Total Hispanic CVAP	<b>N/A</b>	57.8%	50.0%	50.0%	56.2%
Total Other CVAP	<b>N/A</b>	0.2%	0.3%	0.3%	0.2%
<b>Total CVAP</b>	<b>N/A</b>	<b>100%</b>	<b>100%</b>	<b>100%</b>	<b>100%</b>

\* 2010 CVAP - Asian populations are included in "Other"



# Seguin Independent School District

## Plan Comparison SMD 3

<b>DISTRICT 3 - Plan Comparison</b>					
<b>Category</b>	<b>2010</b>	<b>Current</b>	<b>Plan 1</b>	<b>Plan 2</b>	<b>Plan 3</b>
<b>Population Totals</b>					
Total Anglo Population	3,736	3,388	3,690	3,690	3,676
Total Asian Population	15	25	25	25	25
Total Black Population	111	120	161	161	161
Total Hispanic	2,112	2,399	2,811	2,811	2,734
Total Other Population	86	230	255	255	251
<b>Total Population</b>	<b>6,060</b>	<b>6,162</b>	<b>6,942</b>	<b>6,942</b>	<b>6,847</b>
<b>Total Population Percentages</b>					
Total Anglo Population	61.7%	55.0%	53.2%	53.2%	53.7%
Total Asian Population	0.2%	0.4%	0.4%	0.4%	0.4%
Total Black Population	1.8%	1.9%	2.3%	2.3%	2.4%
Total Hispanic	34.9%	38.9%	40.5%	40.5%	39.9%
Total Other Population	1.4%	3.7%	3.7%	3.7%	3.7%
<b>Total Population</b>	<b>100.0%</b>	<b>100.0%</b>	<b>100.0%</b>	<b>100.0%</b>	<b>100.0%</b>
<b>Voting Age Population Percentages</b>					
Total Anglo VAP	67.0%	60.4%	58.7%	58.7%	59.3%
Total Asian VAP	0.3%	0.4%	0.4%	0.4%	0.4%
Total Black VAP	1.5%	1.8%	2.1%	2.1%	2.2%
Total Hispanic VAP	29.8%	33.9%	35.3%	35.3%	34.7%
Total Other VAP	1.4%	3.4%	3.4%	3.4%	3.4%
<b>Total VAP</b>	<b>100.0%</b>	<b>100.0%</b>	<b>100.0%</b>	<b>100.0%</b>	<b>100.0%</b>
<b>Citizen Voting Age Population Percentages</b>					
Total Anglo CVAP	<b>N/A</b>	71.1%	68.1%	68.1%	68.4%
Total Asian CVAP	<b>N/A</b>	0.5%	2.4%	2.4%	2.5%
Total Black CVAP	<b>N/A</b>	0.4%	0.7%	0.7%	0.7%
Total Hispanic CVAP	<b>N/A</b>	27.7%	28.6%	28.6%	28.2%
Total Other CVAP	<b>N/A</b>	0.2%	0.2%	0.2%	0.2%
<b>Total CVAP</b>	<b>N/A</b>	<b>100%</b>	<b>100%</b>	<b>100%</b>	<b>100%</b>

\* 2010 CVAP - Asian populations are included in "Other"

# Seguin Independent School District

## Plan Comparison SMD 4

DISTRICT 4 - Plan Comparison					
Category	2010	Current	Plan 1	Plan 2	Plan 3
<b>Population Totals</b>					
Total Anglo Population	4,197	5,039	3,959	3,959	3,959
Total Asian Population	58	139	94	94	94
Total Black Population	210	332	189	189	189
Total Hispanic	1,833	3,410	2,424	2,424	2,424
Total Other Population	85	350	288	288	288
<b>Total Population</b>	<b>6,383</b>	<b>9,270</b>	<b>6,954</b>	<b>6,954</b>	<b>6,954</b>
<b>Total Population Percentages</b>					
Total Anglo Population	65.8%	54.4%	56.9%	56.9%	56.9%
Total Asian Population	0.9%	1.5%	1.4%	1.4%	1.4%
Total Black Population	3.3%	3.6%	2.7%	2.7%	2.7%
Total Hispanic	28.7%	36.8%	34.9%	34.9%	34.9%
Total Other Population	1.3%	3.8%	4.1%	4.1%	4.1%
<b>Total Population</b>	<b>100.0%</b>	<b>100.0%</b>	<b>100.0%</b>	<b>100.0%</b>	<b>100.0%</b>
<b>Voting Age Population Percentages</b>					
Total Anglo VAP	69.5%	58.3%	61.3%	61.3%	61.3%
Total Asian VAP	0.7%	1.5%	1.3%	1.3%	1.3%
Total Black VAP	3.4%	3.7%	2.7%	2.7%	2.7%
Total Hispanic VAP	25.3%	33.2%	30.9%	30.9%	30.9%
Total Other VAP	1.1%	3.4%	3.8%	3.8%	3.8%
<b>Total VAP</b>	<b>100.0%</b>	<b>100.0%</b>	<b>100.0%</b>	<b>100.0%</b>	<b>100.0%</b>
<b>Citizen Voting Age Population Percentages</b>					
Total Anglo CVAP	<b>N/A</b>	62.4%	69.2%	69.2%	69.2%
Total Asian CVAP	<b>N/A</b>	0.8%	1.0%	1.0%	1.0%
Total Black CVAP	<b>N/A</b>	6.0%	1.9%	1.9%	1.9%
Total Hispanic CVAP	<b>N/A</b>	30.2%	26.9%	26.9%	26.9%
Total Other CVAP	<b>N/A</b>	0.7%	1.0%	1.0%	1.0%
<b>Total CVAP</b>	<b>N/A</b>	<b>100%</b>	<b>100%</b>	<b>100%</b>	<b>100%</b>

\* 2010 CVAP - Asian populations are included in "Other"

# Seguin Independent School District

## Plan Comparison SMD 5

<b>DISTRICT 5 - Plan Comparison</b>					
<b>Category</b>	<b>2010</b>	<b>Current</b>	<b>Plan 1</b>	<b>Plan 2</b>	<b>Plan 3</b>
<b>Population Totals</b>					
Total Anglo Population	4,091	3,979	3,692	3,711	3,693
Total Asian Population	55	30	33	33	33
Total Black Population	189	211	195	199	198
Total Hispanic	1,908	2,474	2,201	2,225	2,161
Total Other Population	68	274	243	249	248
<b>Total Population</b>	<b>6,311</b>	<b>6,968</b>	<b>6,364</b>	<b>6,417</b>	<b>6,333</b>
<b>Total Population Percentages</b>					
Total Anglo Population	64.8%	57.1%	58.0%	57.8%	58.3%
Total Asian Population	0.9%	0.4%	0.5%	0.5%	0.5%
Total Black Population	3.0%	3.0%	3.1%	3.1%	3.1%
Total Hispanic	30.2%	35.5%	34.6%	34.7%	34.1%
Total Other Population	1.1%	3.9%	3.8%	3.9%	3.9%
<b>Total Population</b>	<b>100.0%</b>	<b>100.0%</b>	<b>100.0%</b>	<b>100.0%</b>	<b>100.0%</b>
<b>Voting Age Population Percentages</b>					
Total Anglo VAP	69.5%	61.3%	62.0%	61.8%	62.3%
Total Asian VAP	0.8%	0.5%	0.6%	0.6%	0.6%
Total Black VAP	3.0%	3.0%	3.0%	3.1%	3.1%
Total Hispanic VAP	25.8%	31.7%	30.9%	31.0%	30.4%
Total Other VAP	0.8%	3.6%	3.5%	3.6%	3.6%
<b>Total VAP</b>	<b>100.0%</b>	<b>100.0%</b>	<b>100.0%</b>	<b>100.0%</b>	<b>100.0%</b>
<b>Citizen Voting Age Population Percentages</b>					
Total Anglo CVAP	<b>N/A</b>	69.5%	69.6%	69.3%	70.1%
Total Asian CVAP	<b>N/A</b>	0.4%	0.4%	0.4%	0.4%
Total Black CVAP	<b>N/A</b>	4.3%	4.5%	4.6%	4.5%
Total Hispanic CVAP	<b>N/A</b>	25.0%	24.6%	24.9%	24.1%
Total Other CVAP	<b>N/A</b>	0.8%	0.8%	0.8%	0.8%
<b>Total CVAP</b>	<b>N/A</b>	<b>100%</b>	<b>100%</b>	<b>100%</b>	<b>100%</b>

\* 2010 CVAP - Asian populations are included in "Other"

# Seguin Independent School District

## Plan Comparison SMD 6

<b>DISTRICT 6 - Plan Comparison</b>					
<b>Category</b>	<b>2010</b>	<b>Current</b>	<b>Plan 1</b>	<b>Plan 2</b>	<b>Plan 3</b>
<b>Population Totals</b>					
Total Anglo Population	1,394	1,214	1,564	1,564	1,982
Total Asian Population	15	10	12	12	49
Total Black Population	503	450	419	419	439
Total Hispanic	3,995	3,848	4,209	4,209	4,231
Total Other Population	73	121	141	141	144
<b>Total Population</b>	<b>5,980</b>	<b>5,643</b>	<b>6,345</b>	<b>6,345</b>	<b>6,845</b>
<b>Total Population Percentages</b>					
Total Anglo Population	23.3%	21.5%	24.6%	24.6%	29.0%
Total Asian Population	0.3%	0.2%	0.2%	0.2%	0.7%
Total Black Population	8.4%	8.0%	6.6%	6.6%	6.4%
Total Hispanic	66.8%	68.2%	66.3%	66.3%	61.8%
Total Other Population	1.2%	2.1%	2.2%	2.2%	2.1%
<b>Total Population</b>	<b>100.0%</b>	<b>100.0%</b>	<b>100.0%</b>	<b>100.0%</b>	<b>100.0%</b>
<b>Voting Age Population Percentages</b>					
Total Anglo VAP	27.4%	24.3%	27.5%	27.5%	31.7%
Total Asian VAP	0.3%	0.2%	0.2%	0.2%	0.8%
Total Black VAP	9.2%	8.6%	7.2%	7.2%	7.0%
Total Hispanic VAP	61.7%	64.8%	63.2%	63.2%	58.6%
Total Other VAP	1.4%	2.1%	2.0%	2.0%	1.9%
<b>Total VAP</b>	<b>100.0%</b>	<b>100.0%</b>	<b>100.0%</b>	<b>100.0%</b>	<b>100.0%</b>
<b>Citizen Voting Age Population Percentages</b>					
Total Anglo CVAP	<b>N/A</b>	21.9%	27.4%	27.4%	32.2%
Total Asian CVAP	<b>N/A</b>	2.2%	0.6%	0.6%	0.5%
Total Black CVAP	<b>N/A</b>	12.3%	9.6%	9.6%	10.3%
Total Hispanic CVAP	<b>N/A</b>	61.8%	60.9%	60.9%	55.3%
Total Other CVAP	<b>N/A</b>	1.8%	1.5%	1.5%	1.6%
<b>Total CVAP</b>	<b>N/A</b>	<b>100%</b>	<b>100%</b>	<b>100%</b>	<b>100%</b>

\* 2010 CVAP - Asian populations are included in "Other"

# Seguin Independent School District

## Plan Comparison SMD 7

<b>DISTRICT 7 - Plan Comparison</b>					
<b>Category</b>	<b>2010</b>	<b>Current</b>	<b>Plan 1</b>	<b>Plan 2</b>	<b>Plan 3</b>
<b>Population Totals</b>					
Total Anglo Population	3,904	4,137	3,913	3,913	3,956
Total Asian Population	18	24	24	24	25
Total Black Population	260	205	200	200	211
Total Hispanic	2,012	2,577	2,391	2,391	2,461
Total Other Population	68	223	211	211	214
<b>Total Population</b>	<b>6,262</b>	<b>7,166</b>	<b>6,739</b>	<b>6,739</b>	<b>6,867</b>
<b>Total Population Percentages</b>					
Total Anglo Population	62.3%	57.7%	58.1%	58.1%	57.6%
Total Asian Population	0.3%	0.3%	0.4%	0.4%	0.4%
Total Black Population	4.2%	2.9%	3.0%	3.0%	3.1%
Total Hispanic	32.1%	36.0%	35.5%	35.5%	35.8%
Total Other Population	1.1%	3.1%	3.1%	3.1%	3.1%
<b>Total Population</b>	<b>100.0%</b>	<b>100.0%</b>	<b>100.0%</b>	<b>100.0%</b>	<b>100.0%</b>
<b>Voting Age Population Percentages</b>					
Total Anglo VAP	66.8%	61.7%	62.1%	62.1%	61.7%
Total Asian VAP	0.3%	0.4%	0.4%	0.4%	0.4%
Total Black VAP	4.3%	3.3%	3.4%	3.4%	3.5%
Total Hispanic VAP	27.4%	31.3%	30.8%	30.8%	31.1%
Total Other VAP	1.2%	3.3%	3.3%	3.3%	3.3%
<b>Total VAP</b>	<b>100.0%</b>	<b>100.0%</b>	<b>100.0%</b>	<b>100.0%</b>	<b>100.0%</b>
<b>Citizen Voting Age Population Percentages</b>					
Total Anglo CVAP	<b>N/A</b>	65.7%	67.0%	67.0%	67.0%
Total Asian CVAP	<b>N/A</b>	0.0%	0.0%	0.0%	0.0%
Total Black CVAP	<b>N/A</b>	4.3%	4.5%	4.5%	4.5%
Total Hispanic CVAP	<b>N/A</b>	27.9%	26.4%	26.4%	26.4%
Total Other CVAP	<b>N/A</b>	2.1%	2.2%	2.2%	2.1%
<b>Total CVAP</b>	<b>N/A</b>	<b>100%</b>	<b>100%</b>	<b>100%</b>	<b>100%</b>

\* 2010 CVAP - Asian populations are included in "Other"